

NEWSLETTER

Enabling Great Leaders, To Create Great Schools, Where We Always Put Children First

WWW.INMAT.ORG.UK

TERM | 2024-25

WHAT'S INSIDE

HALL MEADOW FESTIVITIES

THE ABBEY OPENS DOORS TO THEIR NEW NURSERY

STANDENS BARN TERM 1 SUCCESSES

TRUST-WIDE VACANCIES

We are thrilled to welcome you all back to another exciting school year at INMAT. We are proud to announce that we now have 10 'Good' schools within our trust, with Ashby Fields eagerly awaiting their inspection any day now. We are confident they will shine as we know they are already a wonderful school.

With the new Ofsted criteria, schools will no longer receive an overall effectiveness grade. This means any inspection from now on will not have a single judgement. However, we know that each of our schools is amazing. We will make sure to celebrate and share their successes with everyone.

This year I am looking forward to seeing our schools continue to thrive and develop. This September saw the opening of the nursery at The Abbey Primary school. We seem to have been ahead of the curve, with the government announcing their drive to have more nurseries in schools. This is something we are keen to explore across our schools and hope to open more nursery classes soon.

We also know the universal breakfast clubs are a priority for the government. This is something we are also keen to get on board with. There will hopefully be more news to come as the year progresses.

Our commitment to inclusivity remains strong with our 'No Outsiders' approach, ensuring that our schools are welcoming and inclusive spaces for all. This approach helps our children grow into compassionate and informed global citizens.

Additionally, we continue to improve our school buildings, making them more energy-efficient and better places for learning. There are several projects planned across the year, including making sure the infrastructure of our buildings are up to date to meet the needs of our pupils in 2024 and beyond.

Helen Williams, CEO



INMAT began in 2017 with just 4 schools. We are now a group of 11 primary schools that have joined together to harness the richness of diverse learning communities



INCLUSION

Improving education for everyone



INTEGRITY

We are consistently open, honest, ethical and genuine



INITIATIVE

We have the courage to always seek a better way to a better future



INSPIRATION

We use our drive and commitment to energise, engage and inspire



INVOLVEMENT

We encourage our community to take ownership and responsibility

HALL MEADOW

PRIMARY SCHOOL - TERM 1



Harvest Festival 2024: A Wonderful Community Celebration!

On October 11th, Hall Meadow children along with their families, came together to celebrate the annual Harvest Festival. The festival was a huge success, filled with song, poetry, and generosity.



Every child played an important part in making this event special. From the youngest pupils to the eldest, everyone contributed to the spirit of the festival. Our youngest children sang the classic 'Cauliflowers Fluffy' while other classes sang harvest songs, recited poems and taught us all about the history of harvest as well as the importance of harvest around the world. The festival ended with a school-wide sing-along, filling the hall with joyful voices and marking the close of this special day.

A big thank you to all families who generously donated non-perishable food items which were given to the Kettering Food Bank, supporting families and individuals in our local community who are in need. The New School Year is Off to a Great Start! After the summer break, it has been wonderful to see all our children return to school, refreshed and ready to dive into a new year of learning. We're thrilled to share that everyone has settled in well, engaged with their new lessons, and embracing their new classes.

Settling Into New Classes

Across the school, children are getting comfortable with their new classrooms and teachers. It's fantastic to see how quickly they've adapted, showing enthusiasm for their learning and building new friendships. The positive energy in each class has set a great tone for the year ahead!

Exciting Early Years Adventures

Our youngest children have been having a blast exploring the Early Years area, which now features some incredible new resources, thanks to the generous funding from our PTA. These include: An enclosed sand play area – where our little ones can dig, build, and enjoy sensory play. Easels for drawing, painting, and leaf rubbing – sparking creativity and artistic expression as they engage with nature.

It's wonderful to see them exploring these new spaces, getting hands-on with creative activities, and developing their fine motor skills as well as increasing their vocabulary.

A Love for Reading in Our New Library

Children across the school are also loving our new library. It's become a favourite place for children to dive into exciting new books, fostering a passion for reading that will last a lifetime. Whether they're picking up stories for pleasure or gathering information for school projects, it's great to see the library buzzing with excitement.

New Responsibilities Across the School

As always, we encourage our children to take on leadership roles and contribute to our school community. This year, many have stepped up into important roles, including school councillors, playground buddies, reading ambassador and music ambassadors

We also celebrated World Mental Health Day and Dwarfism Awareness month by wearing green which affects our local community. We are looking forward to next term already when we will be preparing to commemorate WWI on November 11th, understanding the importance of speaking out against bullying, wearing our spots for Pudsey and of course, getting into the Christmas spirit with our nativity, panto and Christmas singing on the playground.



GALLERY



FHIS CELEBRATE INTERNATIONAL DAY OF PEACE



SJIS CELEBRATING HARVEST FESTIVAL



AFPS ECO COUNCIL JOIN MAYOR & PCSO ON COMMUNITY LITTER PICK



KPS VISIT THE ASHMOLEUM MUSEUM



SBPS GIRLS FOOTBALL TEAM, 3 WINS AND A DRAW!



TAPS MAKE ETON MESS



HMPs CROSS COUNTRY SUPERSTARS



KPIA RAISE FUNDS ON JEANS FOR GENES DAY



KPJA HALLOWEEN DISCO



LHPS VISITED BY PCSO



WPS CELEBRATE NEW HEAD BOY & GIRL



STANDENS BARN

PRIMARY SCHOOL - TERM 1



What an amazing start to the new school year! We have welcomed many new children and families to our school community and I would like to offer a warm welcome to them all. They are all showing our BEST values - well done and happy school days!



BEST

In assemblies this term, we have introduced BEST to our new children and revisited our values with those who know them well. We have discussed what it means to be Brave, Enthusiastic, Safe and Thoughtful in all areas of our lives and how these values should be demonstrated to all of those we meet and by all of those in our school community- children, staff and parents/carers. 'The true test of BEST is how we behave when no one is watching'.

These are values that can also be used in the home- consistency helps children to understand boundaries and BEST can be useful reminders if they are perhaps not following your expectations but can also be used as reasons when offering praise and rewards.

Our Friday assemblies are one of my favourite parts of the week, we really enjoy seeing our children succeed and be Brave enough to share their accomplishments with the rest of our school. During this time, we celebrate attendance, both in and out of school achievements, home learning and our BEST of the week children.

House Captains

Many children demonstrated both Brave and Enthusiastic and put themselves forward to become a House Captain. House captains support at many events including parents evenings, open days, sports days and also meet with visitors. The applications we received were of an incredibly high standard, which made it very difficult for us to decide on who the successful applicants should be. A huge well done to our new House Captains and Vice Captains- we look forward to working alongside you and watching you lead and demonstrate BEST to our visitors and children.

UK Parliament

Earlier this month, we welcomed Mr Smith from UK Parliament, who led an interesting whole school assembly. He told the children about the rule of democracy, the role of our Government and how laws are discussed and passed between the House of Commons and House of Lords. Our House Captains were MPs and Lords/Baronesses and our Speaker requested 'Order, order!' in the House of Standens Barn.

Mr Smith was very complementary about our school and sent an email to thank our children for being enthusiastic and engaged.

Magnificent Mind Champions

Our new Magnificent Mind Champions received a training day with Pacesetters earlier this term to ensure they understood their new role and how they can implement this in our school and support other children. Magnificent Mind Champions promote positive mental health and these enthusiastic children will be great role models in school and organise activities during lunchtimes for others to enjoy.

STEM school of the year finalist

We are so incredibly proud of our FI in schools team who are finalists for the STEM school of the year at the Northamptonshire Education Awards. This is such a well-deserved recognition of the hard work and enthusiasm of all of those involved and we are so proud of their commitment and innovation. Congratulations to Mr High and Miss Haines for this wonderful achievement!

We are also excited to see Standens Stormers and Aerobarnamic Racers, this year's FI in schools teams begin their team designs and we cannot wait to see your designs and how fast your cars will travel on the track at the regional finals. Good luck!



THE ABBEY NURSERY

The Abbey Primary are excited to have opened their brand new 3 year old Nursery provision from September 2024. The Nursery will cater for a maximum of 16 children at any one time and is already full- with a waiting list! The children have access to first quality teaching with a qualified teacher to give them the best possible start in their educational journey. The new nursery children have been an amazing addition to The Abbey Primary and have settled in well, already showing that they can be their 5Bs and know how to 'be their best!'.

STAFF SHOUT OUTS



Congratulations to Juliet Overland at Kingsley Primary School who has successfully completed her HLTA qualification!

We're so proud of the hard work you put into all you do!



Well done to Shoma Ricotta, the Wellbeing lead at Hall Meadow Primary School who has passed with Distinction the Wellbeing Championship Apprenticeship.

We are so proud of all the effort she put in to this course and feel very lucky to have her in our team both at HMPS but also as a governor at Little Harrowden Primary School.



SAFEGUARDING SPACE



WHAT IS SAFEGUARDING?

Safeguarding is the action that is taken to promote the welfare of children and protect them from harm. Safeguarding means: protecting children from abuse and maltreatment, preventing harm to children's health or development, ensuring children grow up with the provision of safe and effective care, and acting to enable all children and young people to have the best outcomes.

Child protection is part of the safeguarding process. Child protection means: focusing on protecting individual children identified as suffering or likely to suffer significant harm. This includes child protection procedures which detail how to respond to concerns about a child.

USEFUL ACRONYMS & VOCABULARY

- DSL: Designated Safeguarding Lead
- Early Help: Early help services provide help and support as soon as a problem emerges, at any point in a child's life, from the foundation years through to the teenage years. This can be support from all kinds of services and organisations who work together to support the family through whatever challenges they are facing.
- TAC: Team Around a Child TAC (part of Early Help)
- TAF: Team Around the TAF: Family (part of Early Help)
- LADO: Local Authority LADO Designated Officer who deals with the position of trust safeguarding issues
- DBS: Disclosure & Barring DBS Service used to make safe recruitment decisions
- CP: Child Protection
- PREVENT: Part of the governments counter-terrorism strategy to stop people from being drawn into extremism
- County Lines: when illegal drugs are transported from one area to another, often across police and local authority boundaries usually by children/vulnerable people who are coerced into it by gangs.

We are fully committed to ensuring that consistent, effective safeguarding policies, procedures and practices are in place to support pupils, families and staff in all our schools.

All our schools follow the guidance in Keeping Children Safe in Education (2024), Working Together to Safeguard Children, the Governance Handbook. All staff and volunteers will adhere to the INMAT safeguarding policy, whistleblowing policy and staff code of conduct.

Our CEO is the trust designated safeguarding lead. Our trust inclusion lead supports our schools to make sure their processes and procedures are robust and fit for purpose. Each school in our trust has a designated safeguarding lead and a safeguarding governor. We are committed to ensuring that our safeguarding leaders and all staff and volunteers receive the appropriate training to prepare them for their roles.

All our schools will work closely with families for the benefit of the pupils. Staff will make referrals and seek advice and guidance from external agencies such as social care if it is deemed necessary. There may be exceptional circumstances when the school will discuss concerns with social care and/or the police without parental knowledge. Our leaders will always aim to maintain a positive relationship with all parents and carers.

REPORTING CONCERNS

If you have a concern about a pupil or a member of staff in one of our schools, please contact the headteacher.

DESIGNATED SAFEGUARDING LEADS

INMAT - Helen Williams 01604 434600
Trustee Safeguarding Lead - Monica Juan
safeguarding@inmat.org.uk

IF YOU HAVE AN URGENT CONCERN ABOUT A CHILD YOU CAN CONTACT THE POLICE ON 101, OR 999 IN AN EMERGENCY.

YOU CAN ALSO CONTACT MASH DIRECTLY ON 0300 126 7000 OR BY USING THE LINK: [REPORT A CONCERN](#)

GOVERNOR CORNER



CAROLE KIRBY

Trust lead governance professional

As the new academic year gets underway, I'm pleased to welcome our newest trustee, Graham Butt, who joined the trust board in October. The trust board saw the departure of three trustees in the last academic year: Sheila Bryan, Pete Banks and Cei Davies Linn.

Sheila and Pete had volunteered their time and energy as trustees at INMAT since 2016 and had seen the trust grow and evolve in that time. Cei had served four years as a trustee and all three of

them will be missed for their dedication, professional knowledge and enthusiastic involvement.

Richard Monk has stepped into the role of Vice-chair of the board and trustees have been working on a succession plan alongside their other duties and responsibilities.

Local governance continues to flourish with the appointment of new governors at all schools. A number of our Chairs at the local level have attended the NGA's Chairs' Development Programme and we continue to be appreciative of the time and commitment shown by local people in the governance of our schools.

Linda Brookes
Chair



RICHARD MONK

**FOR FURTHER INFO
CONTACT CAROLE:**

governance@inmat.org.uk

TRUSTWIDE VACANCIES



JOIN US, PROGRESS WITH US

CLASS TEACHER (MATERNITY COVER)

ASHBY FIELDS PRIMARY SCHOOL, DAVENTRY

Contract Type: Maternity cover

Contract Term: Full time

Salary: £30,000 - £41,333 Annually (FTE)

Closing date: 31/10/2024

Start Date: 1/11/2024

SITE SUPERVISOR

ST JAMES INFANT SCHOOL, DAVENTRY

Contract Type: Permanent

Contract Term: Part time

Salary: £23,114 Annually (FTE)

Closing date: 25/10/2024

Start Date: 1/1/2025

KS1 CLASS TEACHER

FALCONERS HILL INFANT SCHOOL, DAVENTRY

Contract Type: Permanent

Contract Term: Part time

Salary: £28,000 - £38,810

Closing date: 15/11/2024

Start Date: ASAP

TRUST BUSINESS OFFICER

INMAT CENTRAL OFFICE, LAMPPOST

Contract Type: Permanent

Contract Term: Part Time

Salary: £28,770.00 Annually (FTE)

Closing date: 30/10/2024

Start Date: 01/2025

JOIN OUR TALENT POOLS

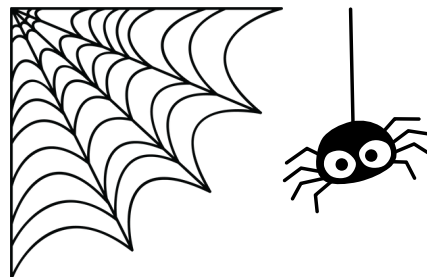


PERMANENT STAFF

Are you a member of staff looking for a new role or a change of setting?

Are you a student looking for a future career with INMAT? Want to work for us, but your dream job isn't advertised right now? Join our talent pool on MyNewTerm to register your interest.

WWW.MYNEWTERM.COM



Have a
Safe
and

Happy

HALLOWEEN

